

---



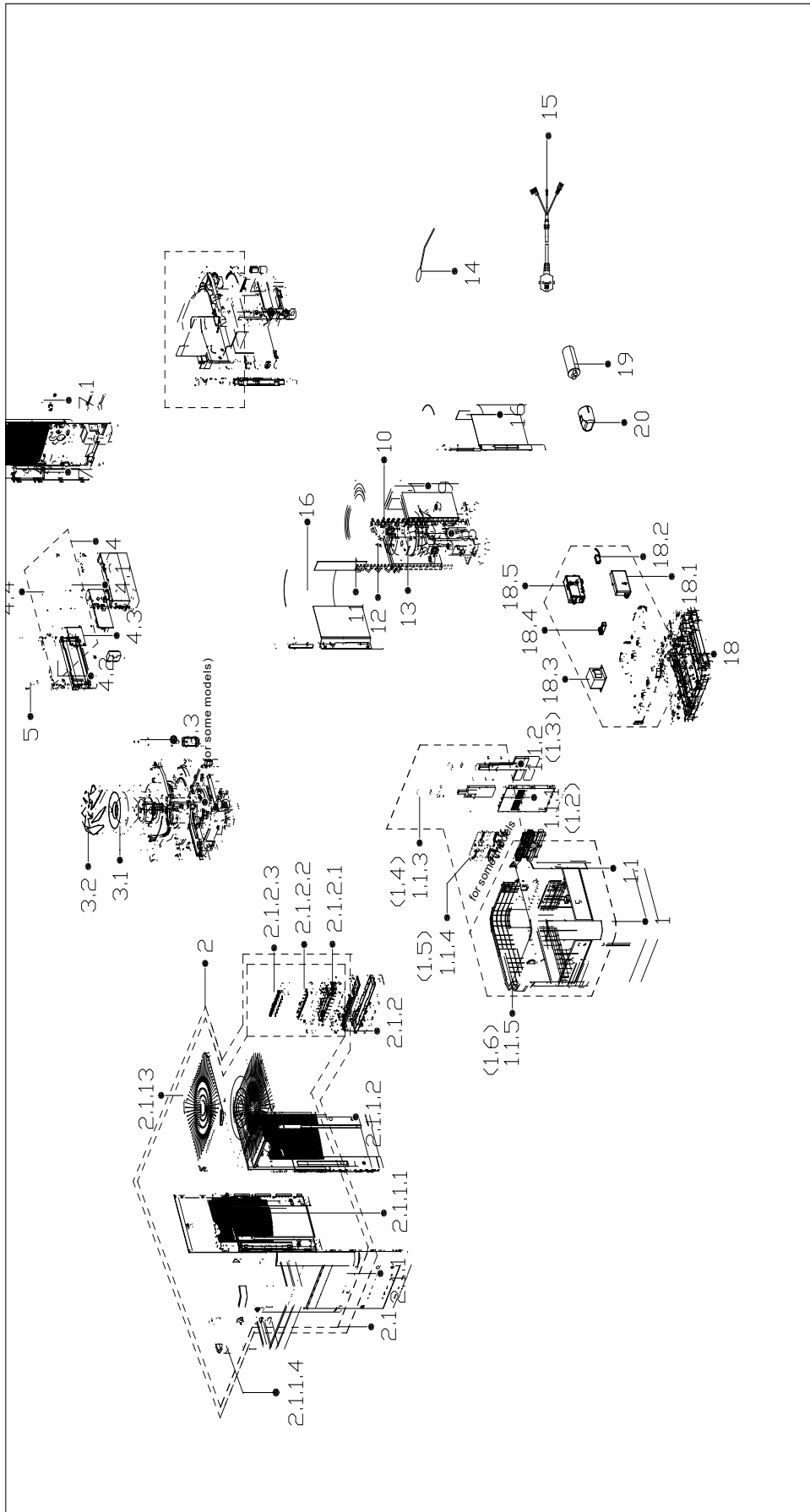
---

**Portable Cube Dehumidifier:**  
BCD-20A

Parts List



# EXPLODED VIEW



# REPLACEMENT PARTS

Location	Part Name	Quantity	Part No.
1	Water tank subassembly	1	12120100006653
1.1	Water tank	1	12120100006919
1.2	Cover of Dobber	1	12120100006499
1.5	installation bracket Subassembly	1	12120100006497
1.6	Handle of water tank	1	12120100006920
2	Front panel assembly	1	12120100A20099
2.1	Front panel assembly	1	12120100A19617
2.1.1	Front panel subassembly	1	12120100A19338
2.1.1.1	Left supporter	1	12120100006490
2.1.1.2	Right Side Plate	1	12120100006488
2.1.1.3	Top cover	1	12120100A19339
2.1.1.4	Handle	1	12120100006486
2.1.2	Display box subassembly	1	17220100A04483
2.1.2.1	display box	1	12120100006482
2.1.2.2	Display box subassembly	1	17120100003269
2.1.2.3	Control panel subassembly	1	12120100006483
3	Supporter assembly of fan motor	1	12120100006502
3.1	Single phase asynchronous motor	1	11002012037595
3.2	Axial flow fan	1	12100105001041
4	Electronic control box subassembly	1	17220100001422
4.1	Electronic control box subassembly	1	12120100006501
4.2	Fan motor capacitor	1	17400101A00490
4.3	Humidity sensor board module(plug-in)(double letter KSH-02BHS scheme)	1	17120100000344
4.4	Dehumidifier main control board subassembly	1	17120100003272
5	Cover of electronic control box subassembly	1	12120100006507
6	Middle partition board assembly	1	12120100006505
7	Rear panel subassembly	1	12120100006504
7.1	Drain Stopper	1	12600801000036
8	Fixed speed rotary compressor	1	11103010018775
9	Evaporator assembly	1	15820100000777
10	Capillary assembly	1	15120100002336
11	Condenser assembly	1	15820100000775
12	Discharge pipe assembly	1	15120100002332
13	Suction pipe assembly	1	15120100002335
14	Pipe Temperature Sensor	1	11201007003442
15	Power cord subassembly	1	17401202008407
16	Air filter	2	12120100006479
18	Chassis assembly	1	12120100006506
18.1	plastic box	1	12120100006543
18.2	Micro Switch	1	17400512000009
18.3	Linear Transformer	1	11203103002179
18.4	Magnetic switch	1	11201605000661
18.5	plastic box	1	12101101000581
19	Capacitor of compressor	1	17400103000062
20	Capacitor box	1	12100601000106

---

Due to ongoing product improvements, specifications and dimensions are subject to change and correction without notice or incurring obligations. Determining the application and suitability for use of any product is the responsibility of the installer. Additionally, the installer is responsible for verifying dimensional data on the actual product prior to beginning any installation preparations.

Incentive and rebate programs have precise requirements as to product performance and certification. All products meet applicable regulations in effect on date of manufacture; however, certifications are not necessarily granted for the life of a product. Therefore, it is the responsibility of the applicant to determine whether a specific model qualifies for these incentive/rebate programs.

*Comfort-Aire*®

1900 Wellworth Ave., Jackson MI 49203 • Ph. 517-787-2100 • [www.marsdelivers.com](http://www.marsdelivers.com)

